



# YOUR IMMUNE SYSTEM'S BEST DEFENSE



## Full-spectrum immune support powered by a novel, clinically supported ingredient

### Spectramune Fast Facts<sup>^</sup>:

- Supports Innate and Adaptive responses
- Demonstrated impact on Adaptive immunity via cell-mediated and humoral immune responses
- Get sick less often: 23% fewer sick days\*
- Feel better: 30% less severe symptoms\*
- Stay active and energized: 23% better quality of life scores\*
- Feel stronger, mentally and physically: improved sense of wellbeing in 3 weeks\*
- More energy, more resilience: 2x improvement in vitality in 12 weeks\*
- Strengthening immune surveillance: Improved White Blood Cells count\*

<sup>^</sup> These outcomes were statistically significant compared to placebo in the clinical study

Spectramune<sup>®</sup> Immune Defense Complex is a patented, synergistic combination of Ashwagandha (*Withania somnifera*) and Haritaki (*Terminalia chebula*).

**Supports Both Innate & Adaptive Immunity:** Clinical studies evaluating immune health and biomarkers show that Spectramune supports improvements across a range of immune functions, including both Innate and Adaptive immunity. Innate immunity is our first line of defense, the body's rapid response system. Adaptive immunity, comprising Cell-Mediated and Humoral immune responses, is the specialized, acquired aspect of immunity mediated by T cells and antibodies. In three clinical studies, Spectramune has been shown to support both in native and adaptive immunity – reducing incidence of illness and lessening the severity of symptoms.

**Backed by Three Clinical Studies:** Reducing illness incidence and improving recovery

**Highly Versatile:** Spectramune is mild-tasting and 70-80% water-soluble, meaning it can be delivered in a variety of product forms from tablets, capsules, and soft gels to functional foods and beverages.

With its full-spectrum effectiveness and versatility, Spectramune can be the foundation of your next immune health product.

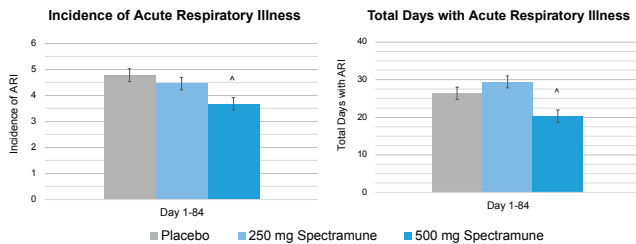


# THIRD CLINICAL STUDY DEMONSTRATES POWERFUL IMMUNE SUPPORT

In a 12-week randomized, double-blind, placebo-controlled, parallel design study, 120 healthy men and women (age 30-60) were given 250 mg or 500 mg of Spectramune or a matching placebo. The primary outcome measured was upper respiratory symptom severity via the Wisconsin Upper Respiratory Symptoms Scale (WURSS-24). Testing of subjects was done at baseline, 3, 6, and 12 weeks. A range of biomarkers was measured at baseline and 12 weeks.

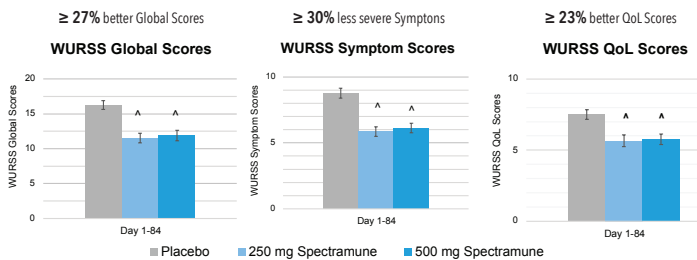
## Reduced Incidence of Acute Respiratory Illness (ARI)

Subjects taking 500 mg of Spectramune experienced 23% fewer episodes of respiratory illness and 23% fewer days sick than those taking a placebo.



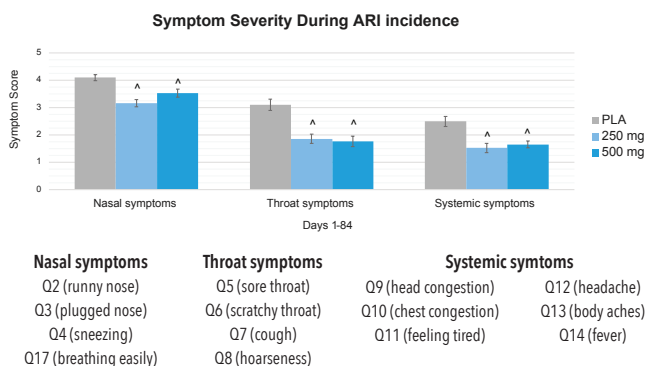
## Improved Global, Symptom and Quality of Life Scores During Illness

During episodes of acute respiratory illness, subjects taking either 250 mg or 500 mg of Spectramune experienced 30% less severe symptoms, and those symptoms had a 23% reduction in impact on their daily activities compared to those taking placebo.



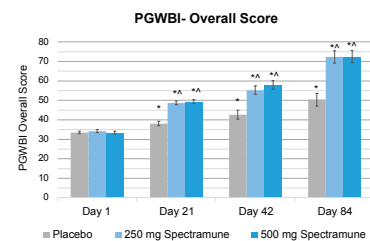
## Reduced Symptom Severity

Subjects taking Spectramune experienced significantly less severe nasal, throat/cough, and systemic symptoms over 12 weeks of supplementation.



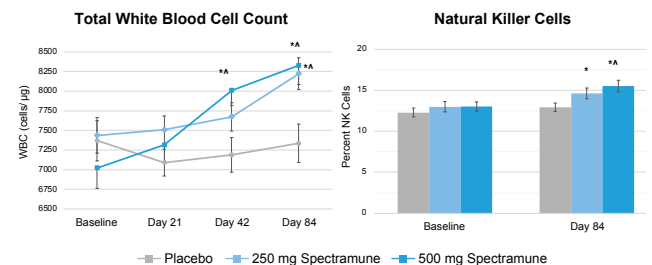
## Psychological General Wellbeing Index

Subjects taking Spectramune experienced significantly improved psychological wellbeing within the first three weeks, with up to 2x improvement over baseline at 12 weeks regardless of dose.



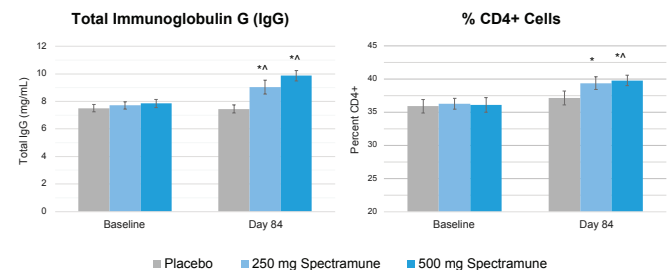
## Enhanced Markers of Innate Immunity

Subjects taking Spectramune had an increased White Blood Cell (WBC) count, reflecting enhanced immune readiness and surveillance. They also had enhancement of Natural Killer cells, immune frontline defenders that improve the body's ability to respond to threats.



## Enhanced Markers of Adaptive Immunity

Spectramune significantly improved Adaptive Immunity via both Humoral and Cell-Mediated immune biomarkers: Total IgG and CD4+ cells, respectively.



Studies on file. For more information on the clinical study implications and messaging opportunities for Spectramune, contact the Science team of PLT.

\* THESE STATEMENTS HAVE NOT BEEN EVALUATED BY THE FOOD AND DRUG ADMINISTRATION. THIS PRODUCT IS NOT INTENDED TO DIAGNOSE, TREAT, CURE, OR PREVENT ANY DISEASE.

Contact PLT Health Solutions for samples and more information.  
**+1.973.984.0900 • www.PLTHealth.com**

© 2025 PLT Health Solutions. All rights reserved. P-2

